



SHELTER

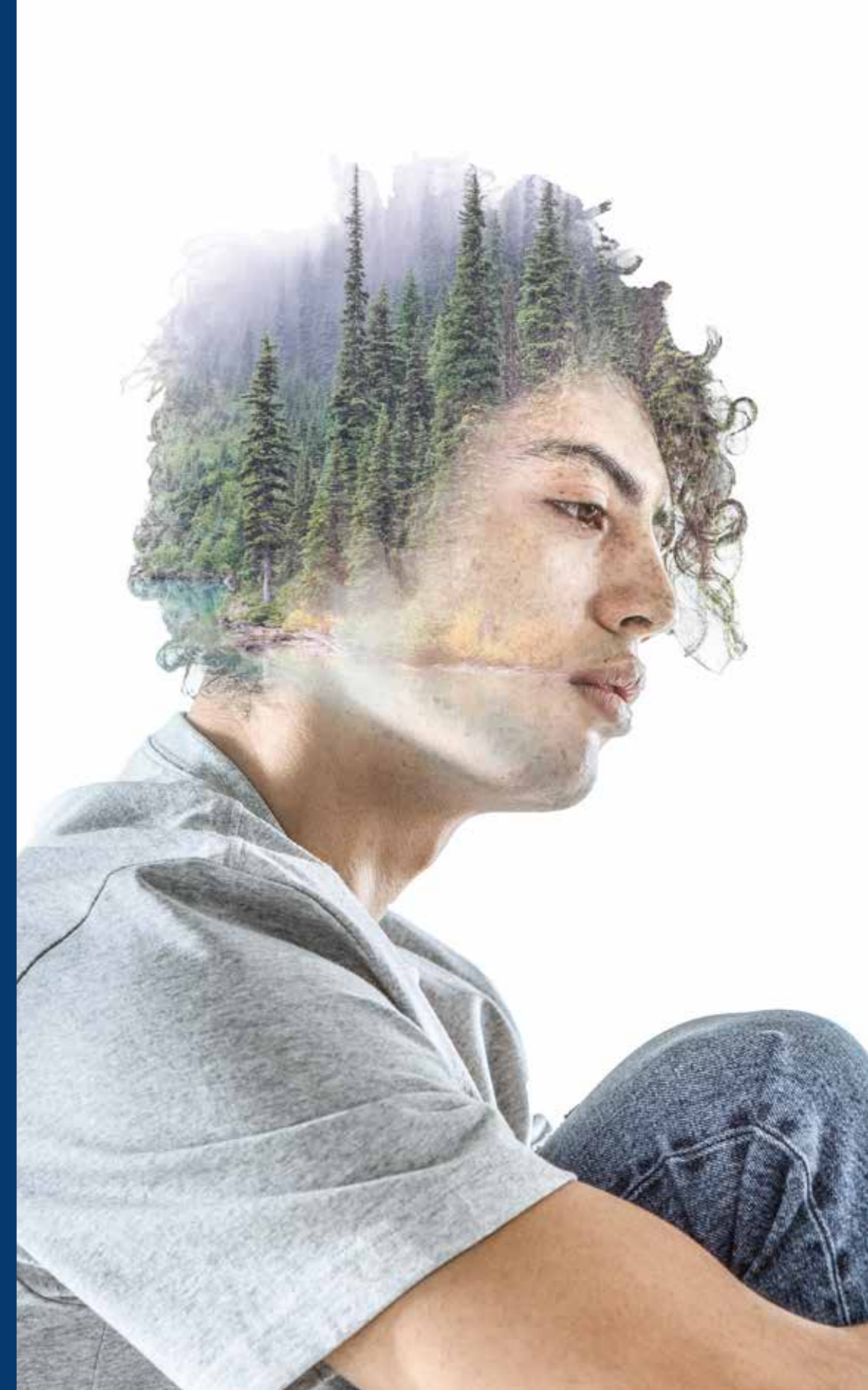
## In touch with nature.

Through biomimicry we studied how Mother Nature has solved a few industry challenges and SHELTER shows what we have learned.

It is cutting-edge molecular science delivering environmentally conscious functional finishing. BIONIC - FINISH - RUDOLF® for liquid repellency and other solutions all provide urban protection and let our jeans stay more on our legs and less in the washing machine. With a positive environmental impact.

*hub*  
1922  
RUDOLF FASHION  
DIVISION

WWW.HUB1922.COM





BIONIC  
FINISH'ECO



Bundesmann test for the evaluation of water repellency carried out at RUDOLF GROUP.

	BIONIC FINISH ECO	UNTREATED
Quantity	8% owg	-
pH	5	5
<b>Bundesmann rain shower test</b> EN 29865 10 min		
• Repellency to water	4	1
• Absorption of water	22.8	111.8
• Penetration of water	15.8	14.5

Water repellency comparison on denim.